

designworks:tiles

Seamless



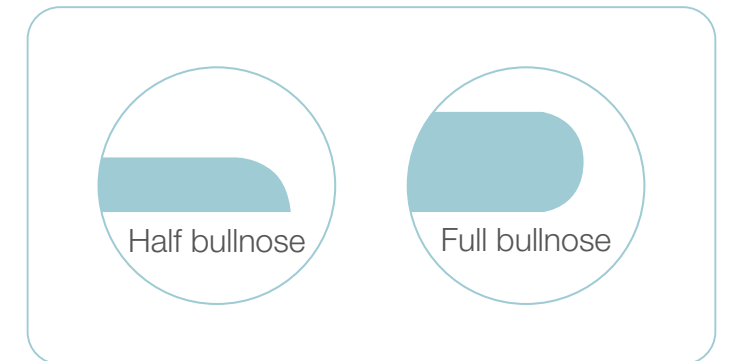


◀ The page opposite shows wood effect Half Bullnose. Below; Full Bullnose

Half / Full Bullnose

A half bull-nose has a rounded top edge but is flat underneath. Ideal for Step treads where an overhang is not required, copings, and as a skirting.

A full bull-nose resembles a letter "U" on it's side. This profile is often used to emphasise an overhang when required.



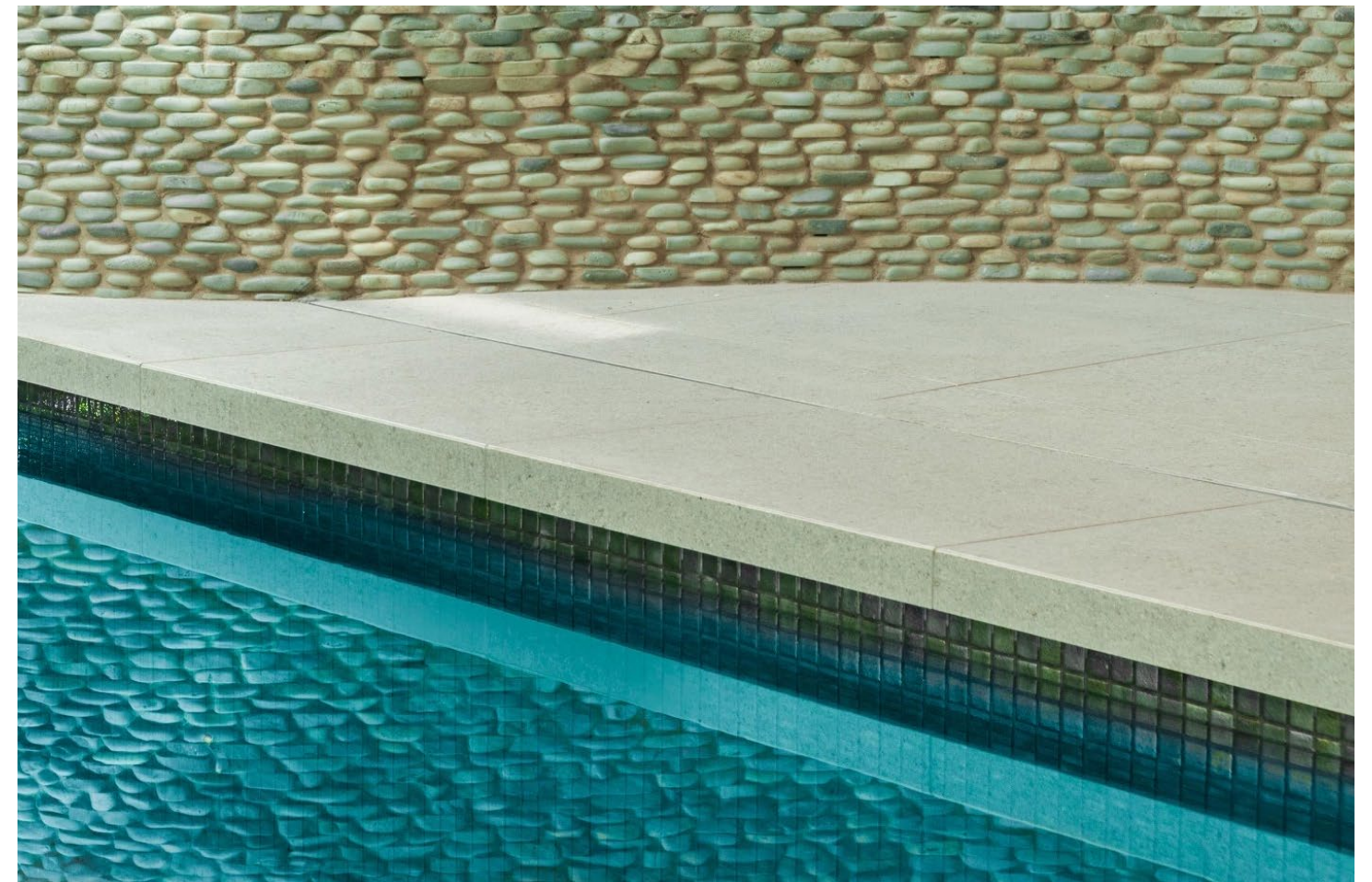


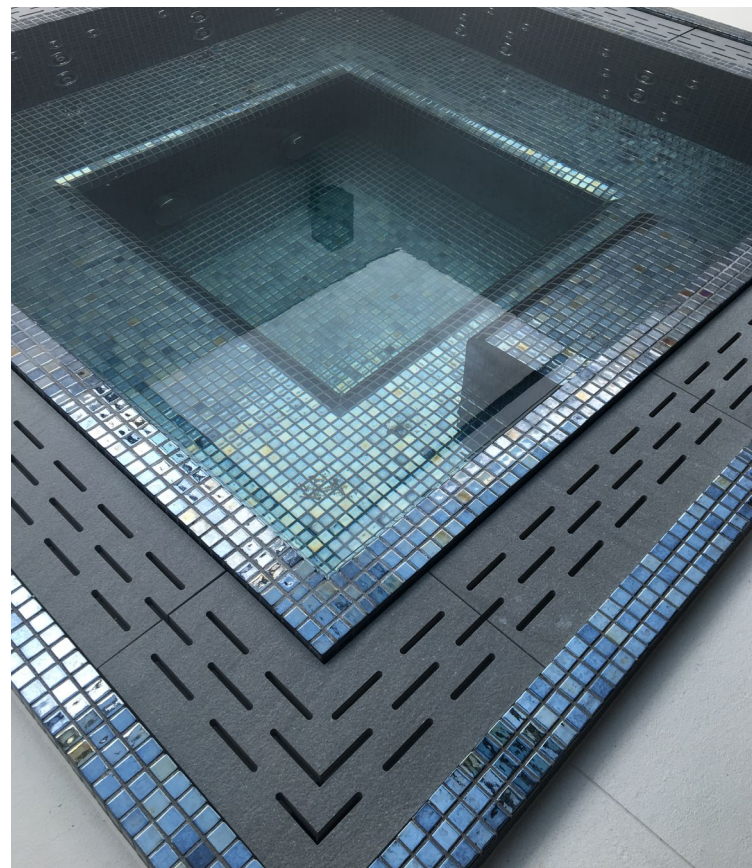
◀ The page opposite shows Drop Down pieces in various tile ranges

Drop Down

The Drop down is a clever way to give the impression of a much thicker, more contemporary looking finishing detail.

Drop down pool edge
A standard 20mm thick porcelain tile: cut, mitred and engineered to form a (typically 40mm) drop edge finishing piece



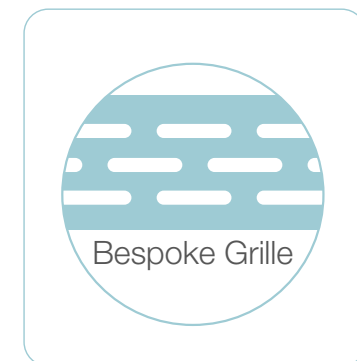


◀ The page opposite shows Bespoke Grilles in various settings and from varying angles

Bespoke Grilles

Crafted from 20mm thick porcelain these beautiful grilles can either match or contrast your design.

Dependant upon the requirements we can produce long straits, corners, or sinuous curves.



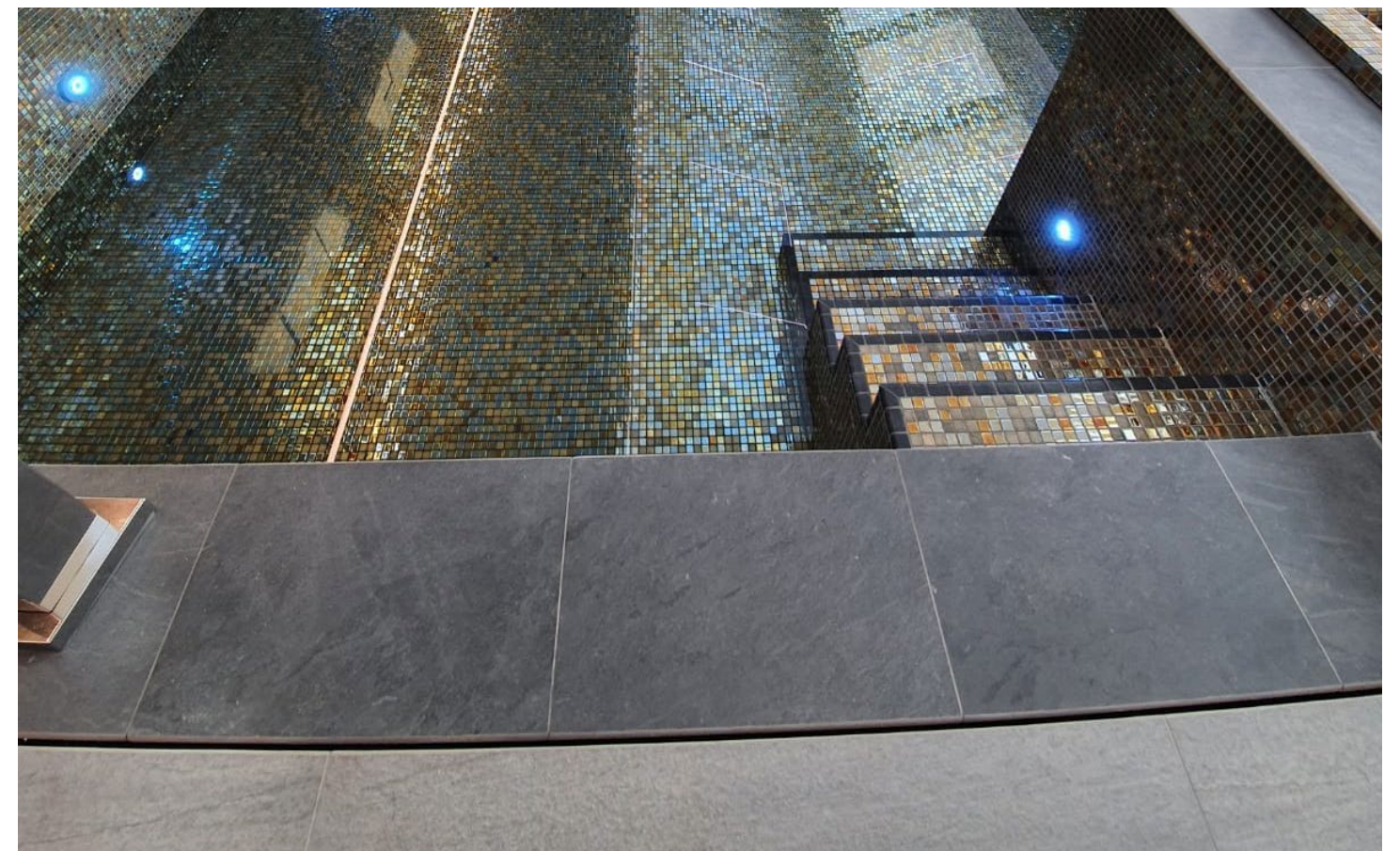
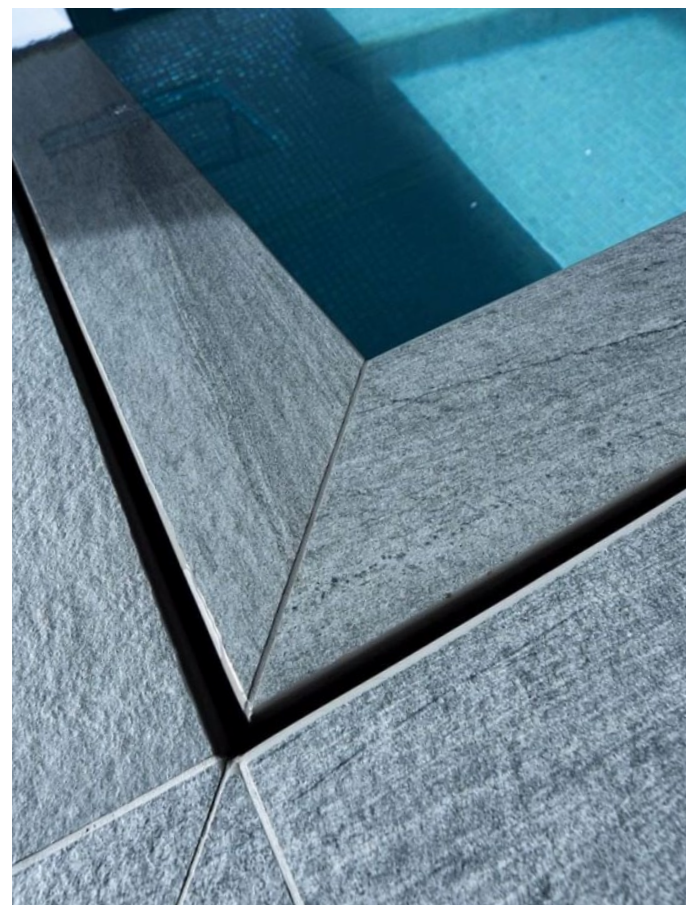
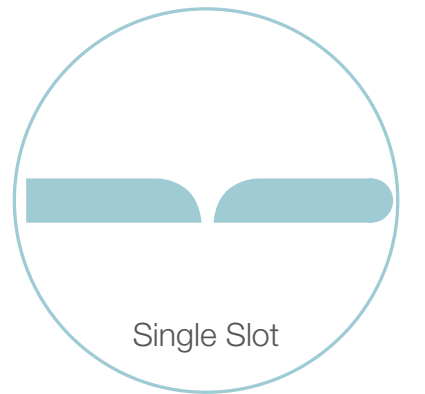


◀ The page opposite shows the Single Slot Grille in various settings and from varying angles

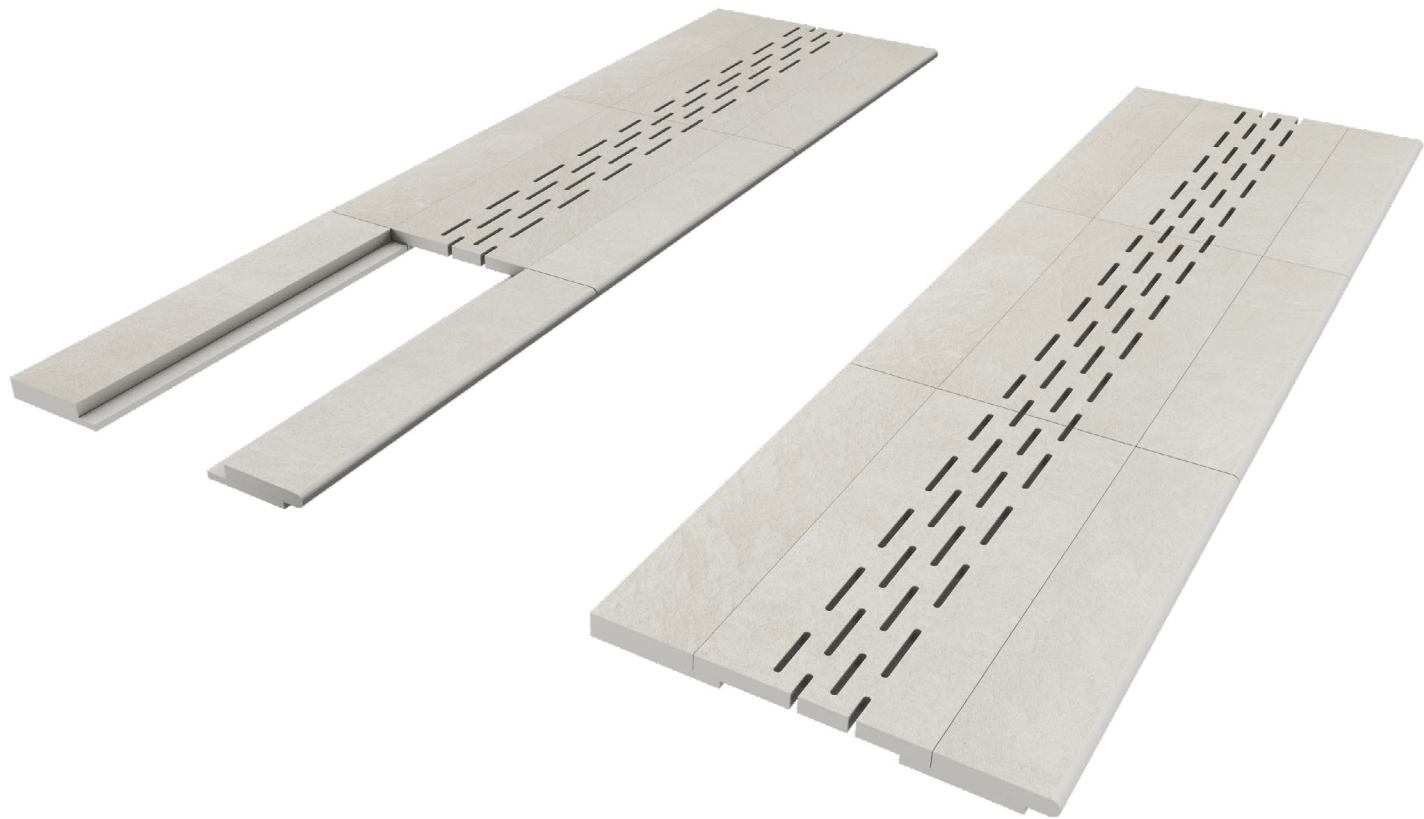
Single Slot Grille System

For the most contemporary residential pool the clean lines of the single slot system is hard to beat.

Single Slot Grille System
A single gap for the drainage of water.
Consists of two pieces with half bull noses for the interior edges and a full bull nose for the pool edge.

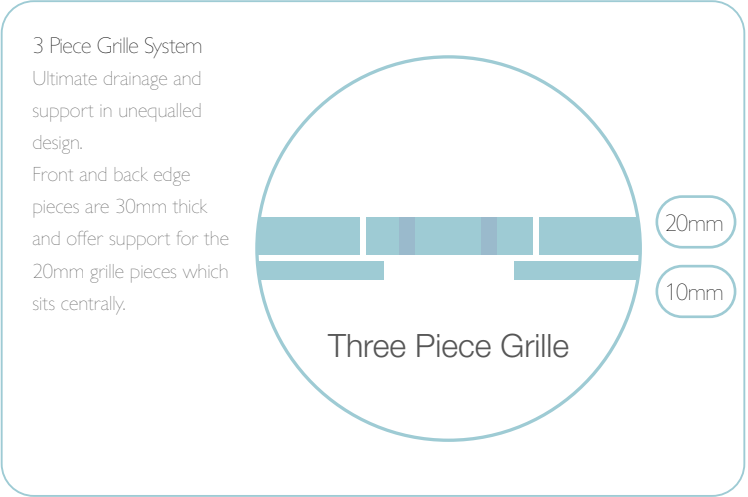


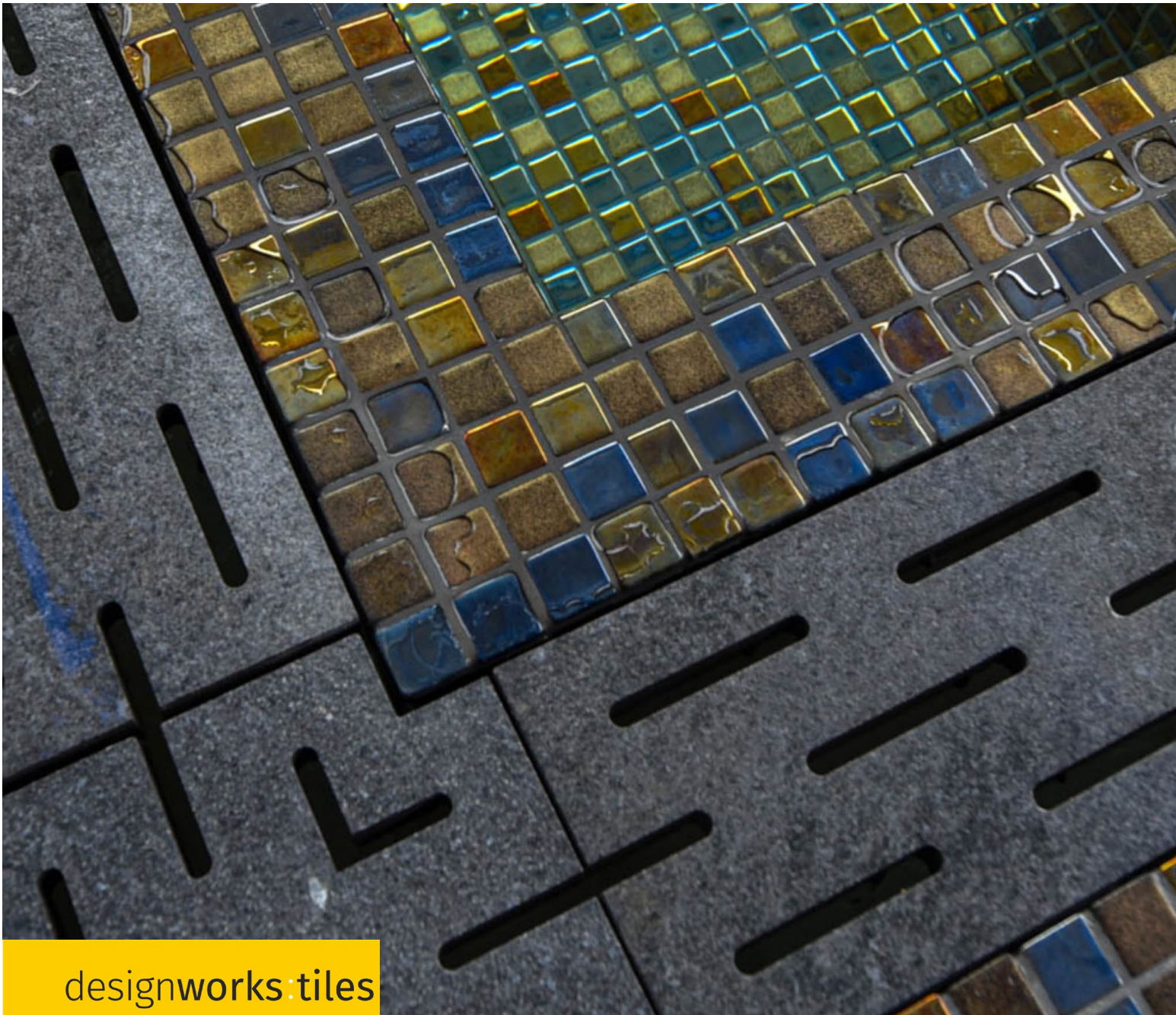
◀ The page opposite shows the Three Piece Grille as a CGI and around a pool



Three Piece Grille System

A complete three piece system comprising of a back edge, grille and bullnosed front piece.





designworks:tiles

Our experienced sales team are on hand and would love to discuss your project.
Let's create beautiful, life-enhancing Pools & Spas together.
Call us today!

Contact Information:
Sales Team | 01392 473037
Email | info@designworkstiles.com

17/01/23