

designworks:tiles

20mm Porcelain



Adelphi

designworks:tiles



Travertino Light





Travertino Light

	Format (mm)	Slip Resistance Values	
	1200 x 600 x 20mm		
Pieces per Box	1	Shod Dry (4S 96)	Barefoot Wet (TRRL 55 Wet)
M2 per Pallet	25.2		
Boxes per Pallet	35		
Colour	Code		
Travertino Light	IM-0032553 ◆	60+	50+

✓ Stocked ◆ Special Order - minimum of one pallet - full pallet quantities only

Atlas

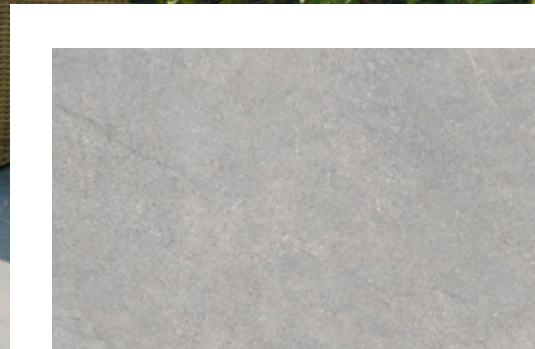
designworks:tiles



White



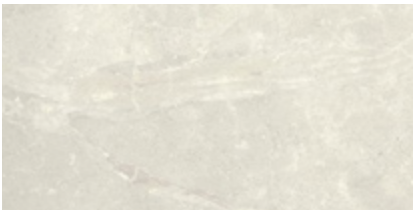
Earth



Grey



Desert



White



Desert



Earth



Grey

	Format (mm)	Slip Resistance Values	
	1200 x 600 x 20mm		
Pieces per Box	1	Shod Dry (4S 96)	Barefoot Wet (TRRL 55 Wet)
M ² per Pallet	23.0		
Boxes per Pallet	36		
Colour	Code		
White	IM-0026989 ◆	50+	40+
* Desert	IM-0026990 ✓		
Earth	IM-0028079 ◆		
* Grey	IM-0026991 ✓		

✓ Stocked ◆ Special Order - minimum of one pallet - full pallet quantities only
* 10mm version available (matt and slip-resistant)

Berwyn

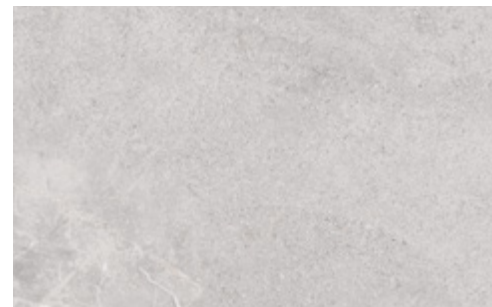
designworks:tiles



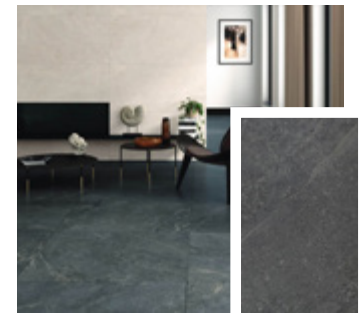
Grey



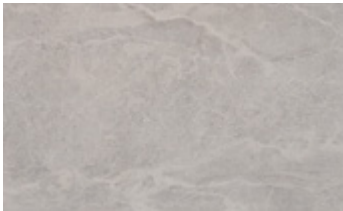
Sand



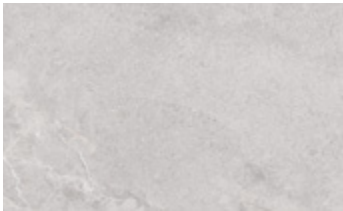
Ash



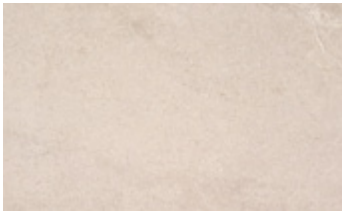
Anthracite



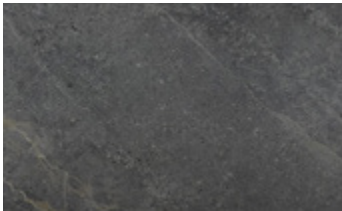
Grey



Ash



Sand



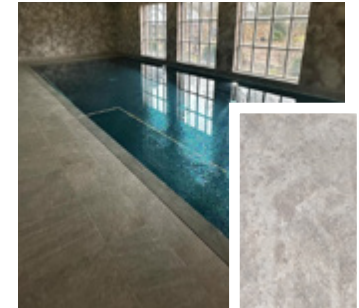
Anthracite

	Format (mm)		Slip Resistance Values	
	600 x 600 x 20mm	900 x 600 x 20mm		
Pieces per Box	2	2	Shod Dry (4S 96)	Barefoot Wet (TRRL 55 Wet)
M2 per Pallet	25.9	22.5		
Boxes per Pallet	36	21		
Colour	Code	Code		
Grey	IM-0030783 ✓	IM-0030554 ✓	60+	36+
Ash	IM-0030784 ✓	IM-0030781 ✓		
Sand	IM-0030782 ✓	IM-0030553 ✓		
Anthracite	-	IM-0032571 ◆		

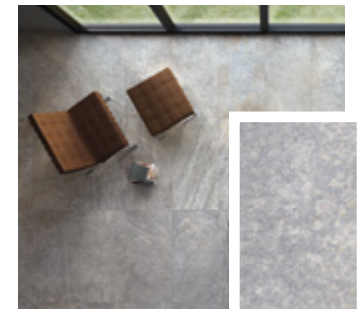
✓ Stocked ◆ Special Order - minimum of one pallet - full pallet quantities only

Crosscliff

designworks:tiles



Grey



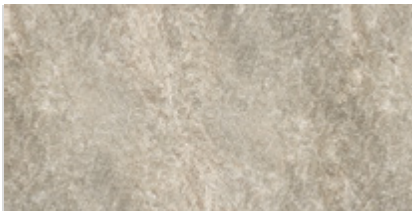
Sky Blue



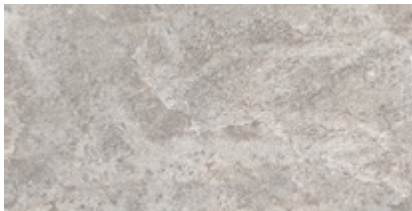
Sand



Greige



Greige



Grey



Sand



Sky Blue

	Format (mm)	Slip Resistance Values	
	1200 x 600 x 20mm		
Pieces per Box	1	Shod Dry (4S 96)	Barefoot Wet (TRRL 55 Wet)
M ² per Pallet	25.9		
Boxes per Pallet	36		
Colour	Code		
* Greige	IM-0027465 ◆	50+	36+
* Grey	IM-0027466 ◆		
* Sand	IM-0027467 ✓		
* Sky Blue	IM-0027468 ◆		

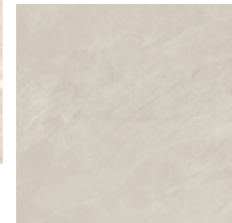
✓ Stocked ◆ Special Order - minimum of one pallet - full pallet quantities only
* 10mm version available (matt and slip-resistant)

District

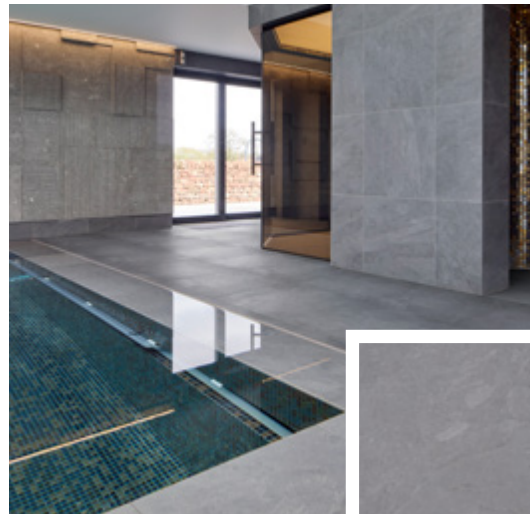
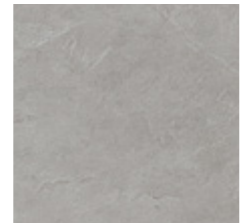
designworks:tiles



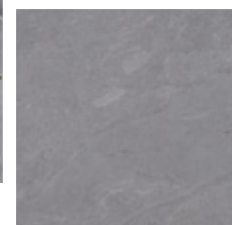
White



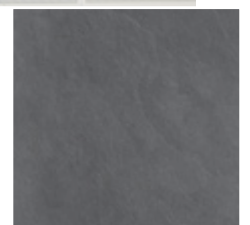
Silver



Grey

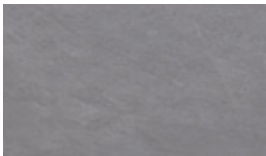


Dark





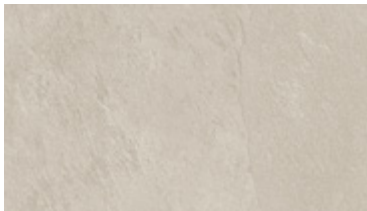
600 x 600 x 20mm



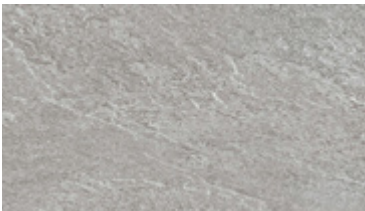
900 x 450 x 20mm



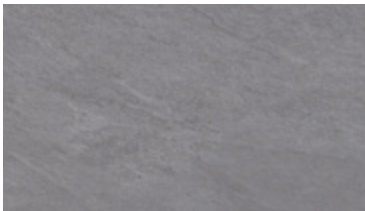
900 x 900 x 20mm



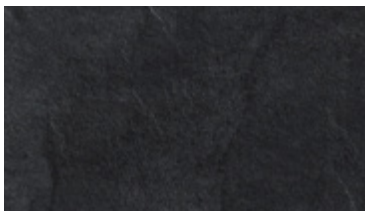
White



Silver



Grey



Dark

	Format (mm)			Slip Resistance Values	
	600 x 600 x 20mm	900 x 450 x 20mm	900 x 900 x 20mm		
Pieces per Box	2	2	1	Shod Dry (4S 96)	Barefoot Wet (TRRL 55 Wet)
M2 per Pallet	23.0	19.4	24.3		
Boxes per Pallet	32	24	30		
Colour	Code			45+	36+
White	IM-0008907 ✓	IM-0021009 ◆	IM-0006164 ✓		
Silver	IM-0019405 ✓	IM-0002184 ◆	IM-0019554 ✓		
Grey	IM-0004779 ✓	IM-0023115 ◆	IM-0001176 ✓		
Dark	IM-0013202 ✓	IM-0016341 ◆	IM-0004587 ◆		

✓ Stocked

◆ Special Order - minimum of one pallet - full pallet quantities only

Greenwich Park

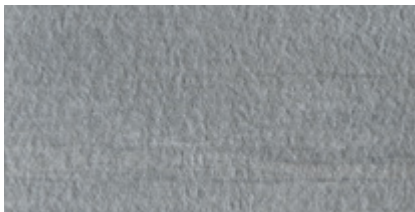
designworks:tiles



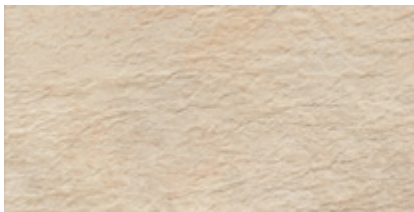
Sand



Grey



Grey



Sand

	Format (mm)		Slip Resistance Values	
	600 x 600 x 20mm	1200 x 600 x 20mm		
Pieces per Box	2	1	Shod Dry (4S 96)	Barefoot Wet (TRRL 55 Wet)
M2 per Pallet	21.6	25.2		
Boxes per Pallet	30	35		
Colour	Code		50+	45+
Grey	IM-0011685 ◆	IM-0006954 ◆		
Sand	IM-0022271 ◆	IM-0003706 ◆		

✓ Stocked ◆ Special Order - minimum of one pallet - full pallet quantities only

Harcombe

designworks:tiles



Grove



Holt



Copse



Glade



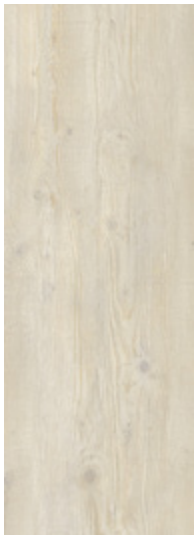
Copse



Grove



Holt



Glade

	Format (mm)	Slip Resistance Values	
	1200 x 400 x 20mm		
Pieces per Box	2	Shod Dry (4S 96)	Barefoot Wet (TRRL 55 Wet)
M ² per Pallet	23.0		
Boxes per Pallet	24		
Colour	Code		
Copse	IM-0029557 ◆	50+	40+
Grove	IM-0029558 ◆		
Holt	IM-0029559 ◆		
Glade	IM-0029560 ◆		

✓ Stocked ◆ Special Order - minimum of one pallet - full pallet quantities only

Holborn

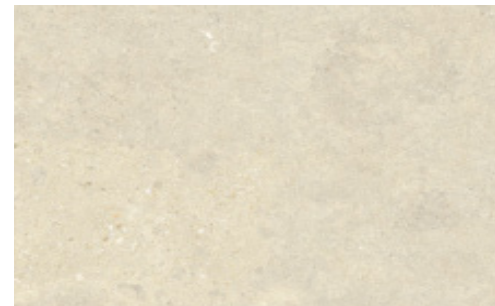
designworks:tiles



Beige



Perle



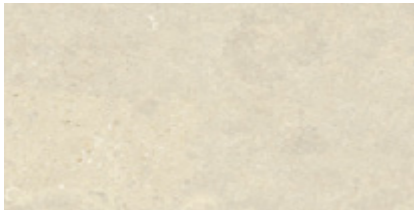
Clair



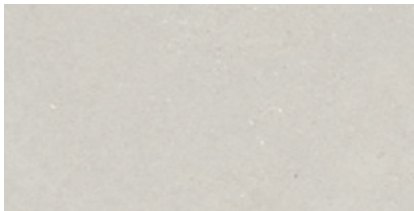
Toffee



Beige



Clair



Perle



Toffee

	Format (mm)	Slip Resistance Values	
	1200 x 600 x 20mm		
Pieces per Box	1	Shod Dry (4S 96)	Barefoot Wet (TRRL 55 Wet)
M ² per Pallet	25.9		
Boxes per Pallet	36		
Colour	Code		
* Beige	IM-0032551 ◆	50+	40+
* Clair	IM-0032549 ◆		
* Perle	IM-0032552 ◆		
* Toffee	IM-0032550 ◆		

✓ Stocked ◆ Special Order - minimum of one pallet - full pallet quantities only

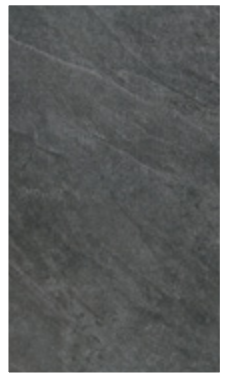
* 10mm version available (matt and slip-resistant)

Honister

designworks:tiles



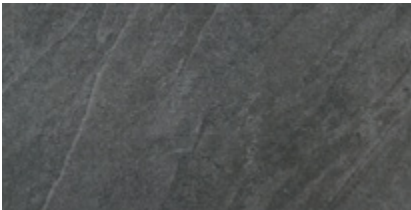
Anthracite



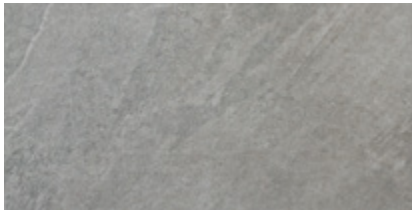
Sand



Grey



Anthracite



Grey



Sand

	Format (mm)	Slip Resistance Values	
	900 x 600 x 20mm		
Pieces per Box	2	Shod Dry (4S 96)	Barefoot Wet (TRRL 55 Wet)
M2 per Pallet	22.5		
Boxes per Pallet	21		
Colour	Code	50+	45+
Anthracite	IM-0032828 ✓		
Grey	IM-0032830 ✓		
Sand	IM-0032829 ✓		

✓ Stocked ◆ Special Order - minimum of one pallet - full pallet quantities only

Kroma

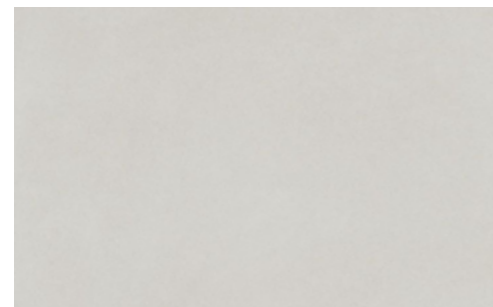
designworks:tiles



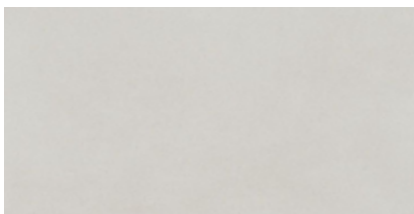
Grey



Sand



White



White



Sand



Grey

	Format (mm)	Slip Resistance Values	
	1200 x 600 x 20mm		
Pieces per Box	1	Shod Dry (4S 96)	Barefoot Wet (TRRL 55 Wet)
M² per Pallet	25.9		
Boxes per Pallet	36		
Colour	Code		
White	IM-0026988 ♦	50+	40+
Sand	IM-0026986 ♦		
Grey	IM-0026987 ♦		

✓ Stocked ♦ Special Order - minimum of one pallet - full pallet quantities only

Bespoke Fittings

designworks:tiles

To bring your dream project to life, we offer a bespoke service for grille cappings and edge details. Whether you're looking for a seamless match or a striking contrast, sharp, linear shapes or graceful curves, we'll elevate your ideas to new heights.

Here are some examples of finishing pieces machined from our 20mm porcelain offer. These pieces highlight the versatility and quality of our porcelain, adding a touch of elegance and durability to your project.

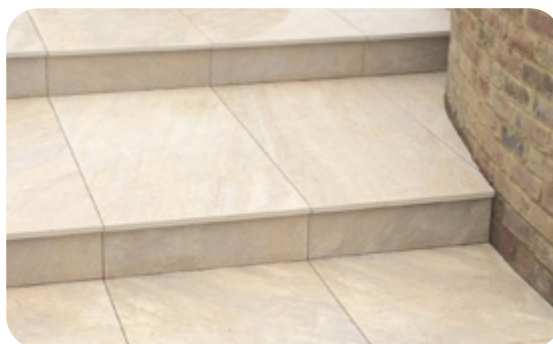


L - Shape Corner Piece 20mm
Typically 600 x 600mm



Drop down step edge

A standard 20mm thick porcelain tile:
cut, mitred and engineered to form a
(typically 40mm) drop edge finishing piece



Half bullnose 20mm
600mm long and up to 600mm wide



Pathway or Edging tread 20mm
Typically 600 x 100mm

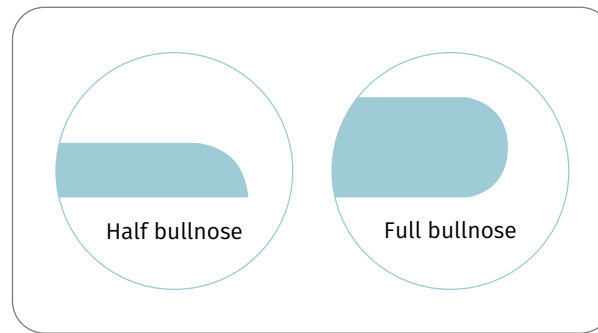


Full bullnose 20mm
600mm long and up to 600mm wide



A **half bull-nose** has a rounded top edge but is flat underneath. Ideal for Step treads where an overhang is not required, copings, and as a skirting.

A **full bull-nose** resembles a letter “U” on it’s side. This profile is often used to emphasise an overhang when required.

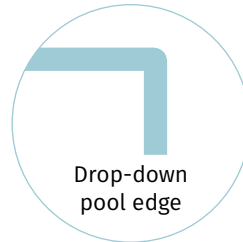


Half Bullnose

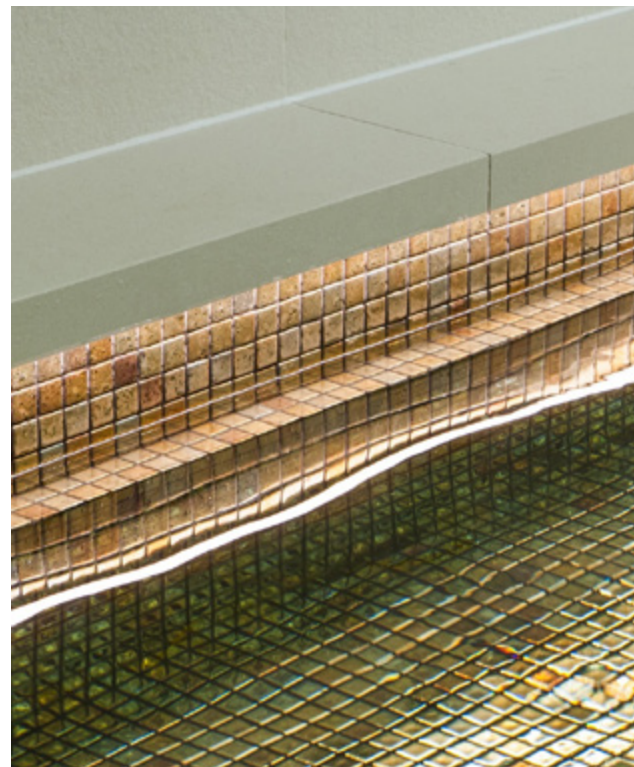


Full Bullnose

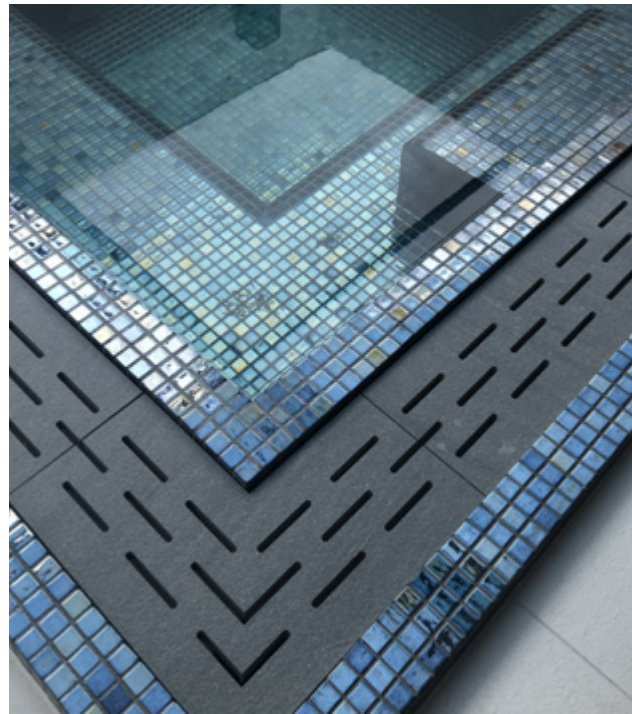
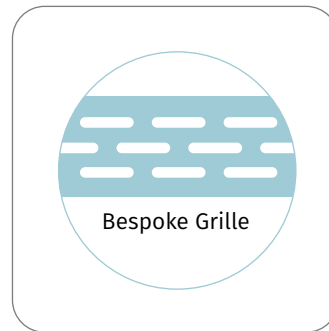
The **drop-down** is a clever way to give the impression of a much thicker, more contemporary looking finishing detail.



Drop-down pool edge
A standard 20mm thick porcelain tile: cut, mitred and engineered to form a (typically 40mm) drop edge finishing piece

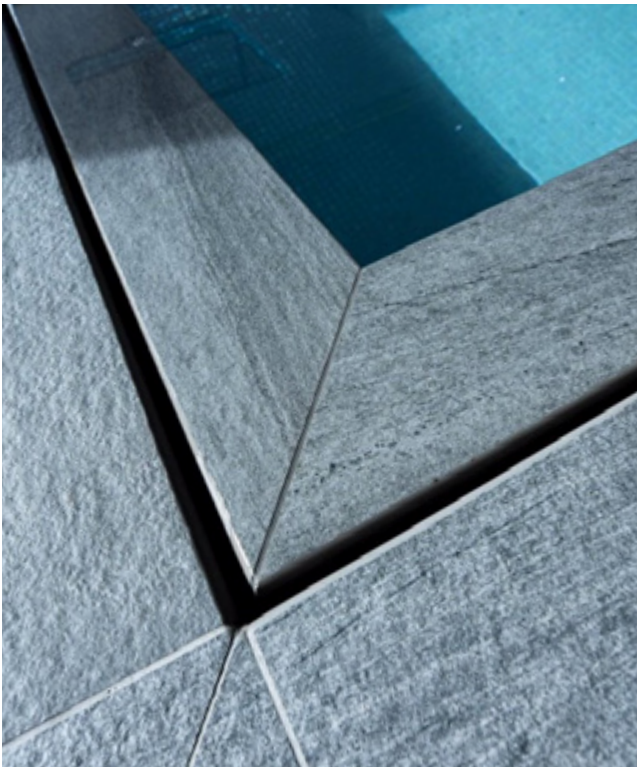
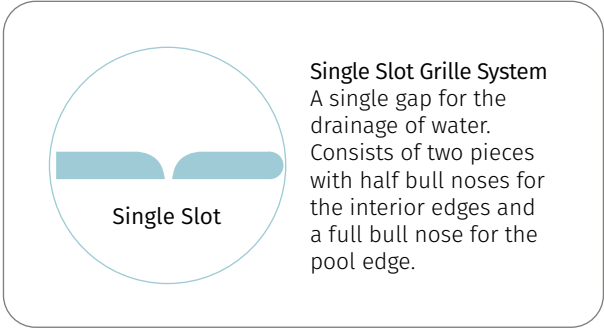


Crafted from 20mm thick porcelain these beautiful grilles can either match or contrast your design. Dependant upon the requirements we can produce long straits, corners, or sinuous curves.



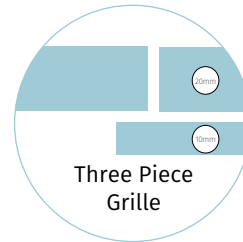
Single Slot Grille System

For the most contemporary residential pool the clean lines of the single slot system is hard to beat.



Three Piece Grille System

A complete three piece system comprising of a back edge, grille and bullnosed front piece.



Three Piece Grille

3 Piece Grille System
Ultimate drainage and support in unequalled design. Front and back edge pieces are 30mm thick and offer support for the 20mm grille pieces which sits centrally.





designworks:tiles

Our experienced sales team are on hand and would love to discuss your project.
Let's create beautiful, life-enhancing Pools & Spas together.

tel 01392 473037, fax: 01392 473035 / info@designworkstiles.com / www.designworkstiles.com